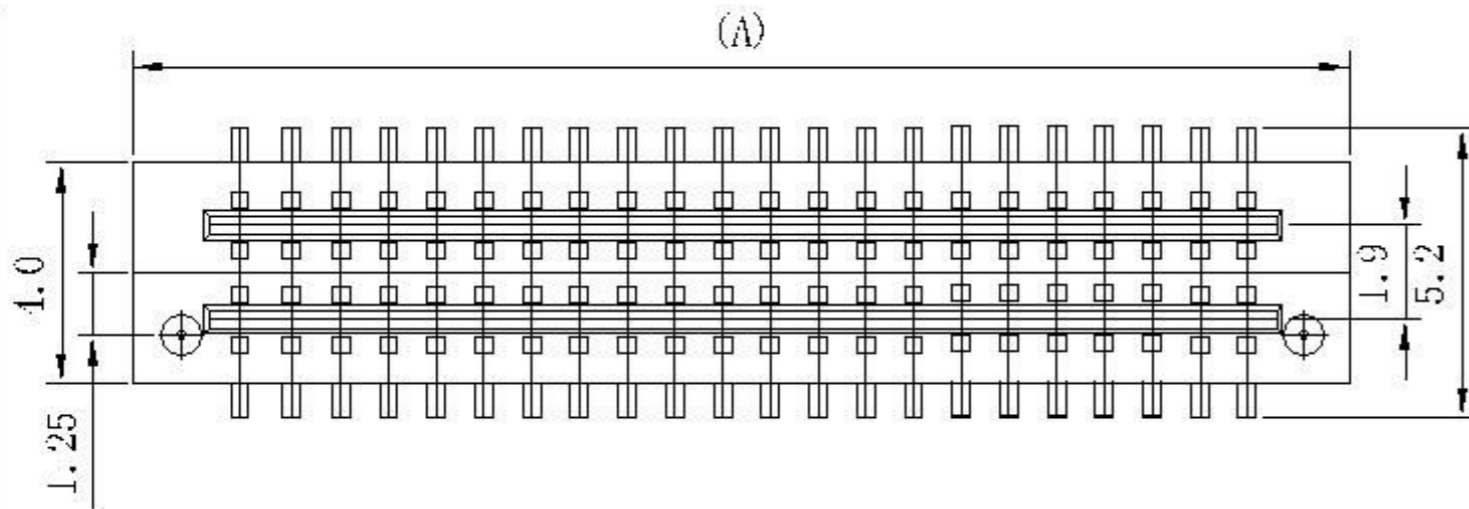


Electrical  
 Vlotag Rating:50V AC(rms)/DC  
 Current Rating:0.5A AC(rms)/DC  
 Contact Resistance:50 m Ω Max  
 Insulation Resistance:100 M Ω min  
 Dielectric Withstanding Voltage:500V  
 AC r.m.s  
 Operating Temperature:-40 ℃ ~ 80℃  
 Materials  
 Housing:High Temperature Plastic UL  
 94V-0  
 Terminal:Copper Alloy  
 Material: PA9T  
 Contact:phosphor bronzae, Glod Plating

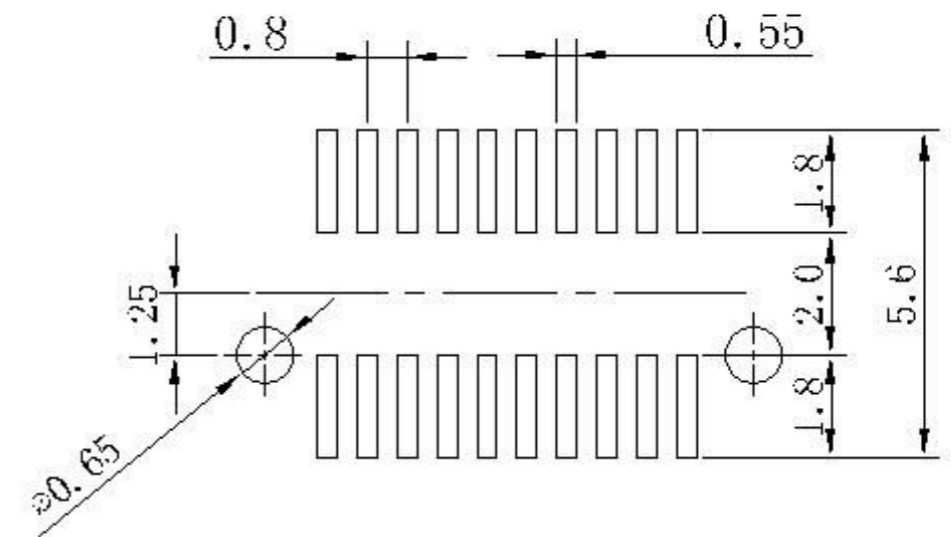
UNSPECIFIED TOLERANCE: ±0.20

\* Dimension Table

Pin	A	B	C
8P	5.1	2.1	1.2
10P	5.9	3.2	5.0
12P	6.7	1.0	5.8
11P	7.5	1.8	6.6
16P	8.3	5.6	7.1
18P	9.1	6.1	8.2
20P	9.9	7.2	9.0
22P	10.7	8.0	9.8
21P	11.5	8.8	10.6
26P	12.3	9.6	11.1
28P	13.1	10.1	12.2
30P	13.9	11.2	13.0
32P	11.7	12.0	13.8
31P	15.5	12.8	11.6
36P	16.3	13.6	15.1
38P	17.1	11.1	16.2
10P	17.9	15.2	17.0



HGH	PLUG(H)	SOCKET(H)
1.0	3.0	1.0
1.5	3.5	1.0
5.0	3.0	2.0
5.5	3.5	2.0

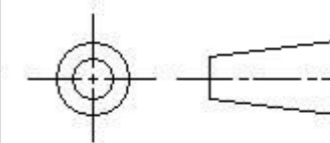


PCB Layout for Surface Mounting

深圳市永连旺电子有限公司

B-TO-B PITCH 0.8mm 合高 4.0 (母)

Customer:	Approval:	Unit	Scale	Date
Drawing:	Check:	mm	5:1	08.05.11



P NO:

Pin Longer:

Signatuer: